



Peyton's Ridge

HUBERT, NORTH CAROLINA | STARTING IN THE \$300s

Community Look Book

An aerial photograph of a residential community. In the foreground, there is a large, irregularly shaped pond with a small fountain in the center. A paved road curves around the pond. To the left of the pond, there are several buildings and a dirt area. In the background, a large residential development with many houses is visible, surrounded by trees and open fields. The sky is clear and blue.

COMMUNITY AMENITIES



**Peyton's Ridge
invites you to
experience the
perfect blend of
coastal living and
military
convenience.**

Welcome to Peyton's Ridge!

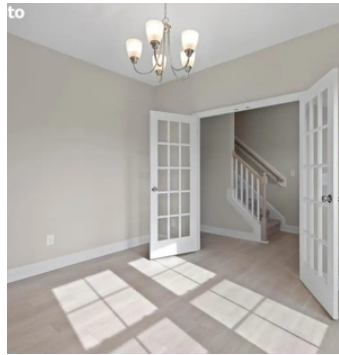
The neighborhood has spacious lots and a pond with the community ducks. It's location is perfectly situated between Jacksonville with the ease of access to Camp Lejeune and Swansboro's coastal living atmosphere.





5
0
5

HOME PLANS



**Photos of similar homes*



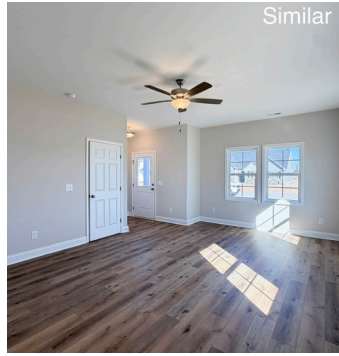
WEDGEWOOD



BROOKSTONE



**Photos of similar homes*



*Photos of similar homes



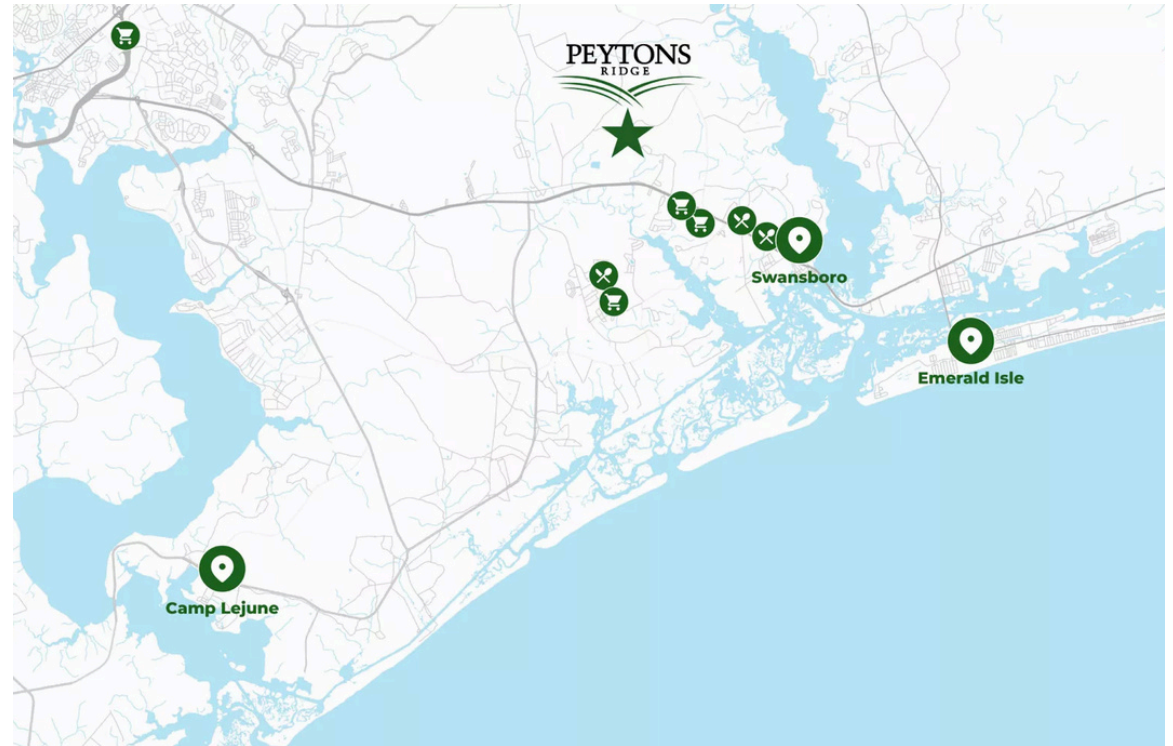
THE LOCATION

Discover Hubert, strategically situated in Onslow County, North Carolina, on the northern fringes of the Camp Lejeune Marine Corps Military Base. Embracing the scenic Intercoastal Waterway, Hubert is adorned with picturesque inlets and waterways, creating a captivating landscape. The Gulf Stream, just off our coast, intricately influences our weather, offering the luxury of four distinct seasons without the inconvenience of inland ice and snow. Hubert is on the precipice of a real estate boom, propelled by the irresistible combination of delectable seafood, idyllic weather, and the warmth of its people. Positioned under the civic and legal umbrella of prominent towns like Jacksonville and Swansboro, Hubert boasts a vibrant community comprising both longtime local residents and dedicated military members. Indulge in the coastal charm and investment potential that Hubert presents—a haven where lifestyle, climate, and community converge for an unparalleled living experience.

SCHOOLS:

Onslow County School District

- Sand Ridge Elementary
- Queens Creek Elementary
- Swansboro Middle
- Swansboro High
- White Oak High





CONTACT US

Whether you are looking to schedule a tour or simply gather more information about this all inclusive community, I am here to assist you.



COURTNEY CARTER
LISTING SPECIALIST, BUYER'S
AGENT

910-526-5151

Dream Discover Build

NEW HOMES

A COURTNEY CARTER HOMES AFFILIATE

DREAMDISCOVERBUILDNC.COM